

**Glasgow KIDS
FUN TRIATHLON**



Saturday 16th May 2026

Start from 11:00am

Please check your race email for your individual start time

Glasgow Club Bellahouston

Glasgow

G52 1HH

What3words: doors.jungle.digs



Welcome

Page 2

Essential Information

Page 3

Cycle Transition Area

Page 4

Event Map

Page 4

Swim, Cycle, Run,

Relay

Page 6

Further Information

Page 7

Our Event Calendar

Page 8

Our Partners

Page 10

Race Day Information 2026

Welcome

Please read this Race Day Information Pack prior to the event day to ensure you arrive fully prepared.

Race Day Checklist

- Race number (can be found on your race day email)
- Appropriate clothing - Shorts and T-shirt (or something a little warmer if the weather isn't so kind!) are absolutely fine to wear or a tri-suit is also permitted. You can also purchase an official UK Triathlon event T-Shirt at the event.
- Additional clothing for wet/cold weather
- Cycle (any type of cycle can be used as long as it is road worthy)
- Cycle/Running Shoes (bare foot running is not permitted)
- Cycle helmet
- Drinks bottle (optional)
- Elastic race number belt (optional but available to purchase next to registration for £10)
- Sunglasses (optional)
- Cycle tools/puncture kit (if desired)
- Running cap (optional)

Distances

Age Guide	Event Name	Swim	Bike	Run
5-7 years	Tin	14m	1km	500m
6-9 years	Zinc & Relay	25m	1km	500m
8-11 years	Steel	50m	2km	1km
10-13 years	Bronze & Relay	50m	3km	1.5km
12-15 years	Silver	100m	4km	2km
14-16 years	Gold & Relay	150m	4km	2.5km

Travel & Parking G52 1HH/what3words: doors.jungle.digs

Please use the leisure centre car park for parking and follow the 'to the triathlon'/'Registration this way' signs.

Toilets & changing facilities

Toilets, showers and changing facilities are available inside the leisure centre.



From the car park follow the signs 'To the triathlon/Registration this way'

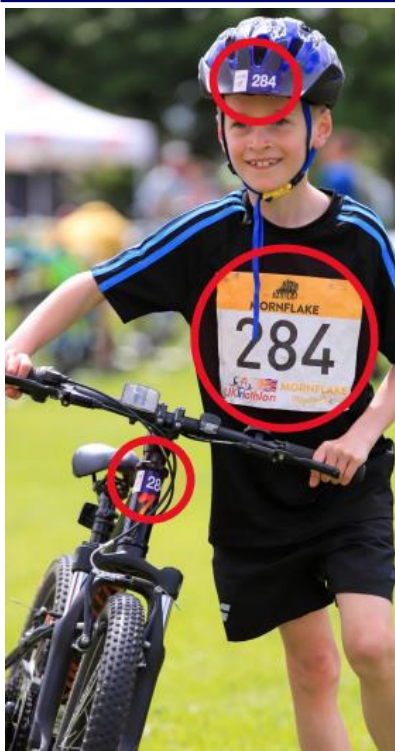
Registration

- Registration is located in the orange Mornflake marquee
- Please arrive at least 60 minutes before your child's start time to familiarise yourselves with the layout of the event.
- At registration you will be asked for your child's race number (which can be found on your email), once your details have been checked you will be handed a race envelope and an instruction sheet, please read this carefully.
- Registration will be open from 09:45am.

Race Envelope

At registration you will receive a race envelope containing:

- Race Number x1, Cycle Sticker x1, Helmet sticker x1, Numbered Wristband x2 (one for competitor & one for parent).
- Safety pins will not be enclosed however they will be available if required.



What to do with your Race Envelope contents

- **Wristbands**, one for the competitor and one wristband that the supporting parent/guardian must wear (if required), if helping a competitor. This will permit access into the Cycle Transition Area. It's fine if you are responsible for several children, just wear all numbered wristbands corresponding to them.
- **Cycle number sticker**, attach to the front handlebar stem.
- **Helmet sticker**, attach to the front of the helmet.
- **Race Number**, the race number must be worn on the front for the cycle and run. It is good practice to write name, blood group (if known) and any allergies on the back of the race number. You may use an elastic number belt to attach the race number to, opposed to pinning the number directly to a T-shirt or tri-suit.

Important Cycle Care Information

Make sure your cycle brakes and gears are all in perfect working order for race day. There will be a self-service cycle station at the event. It has track pumps, specific cycle tools, tyre levers and a bike stand.

Inner tubes will be for sale in the UK Triathlon store next to registration. You should however carry a spare inner tube which specifically fits your wheels.

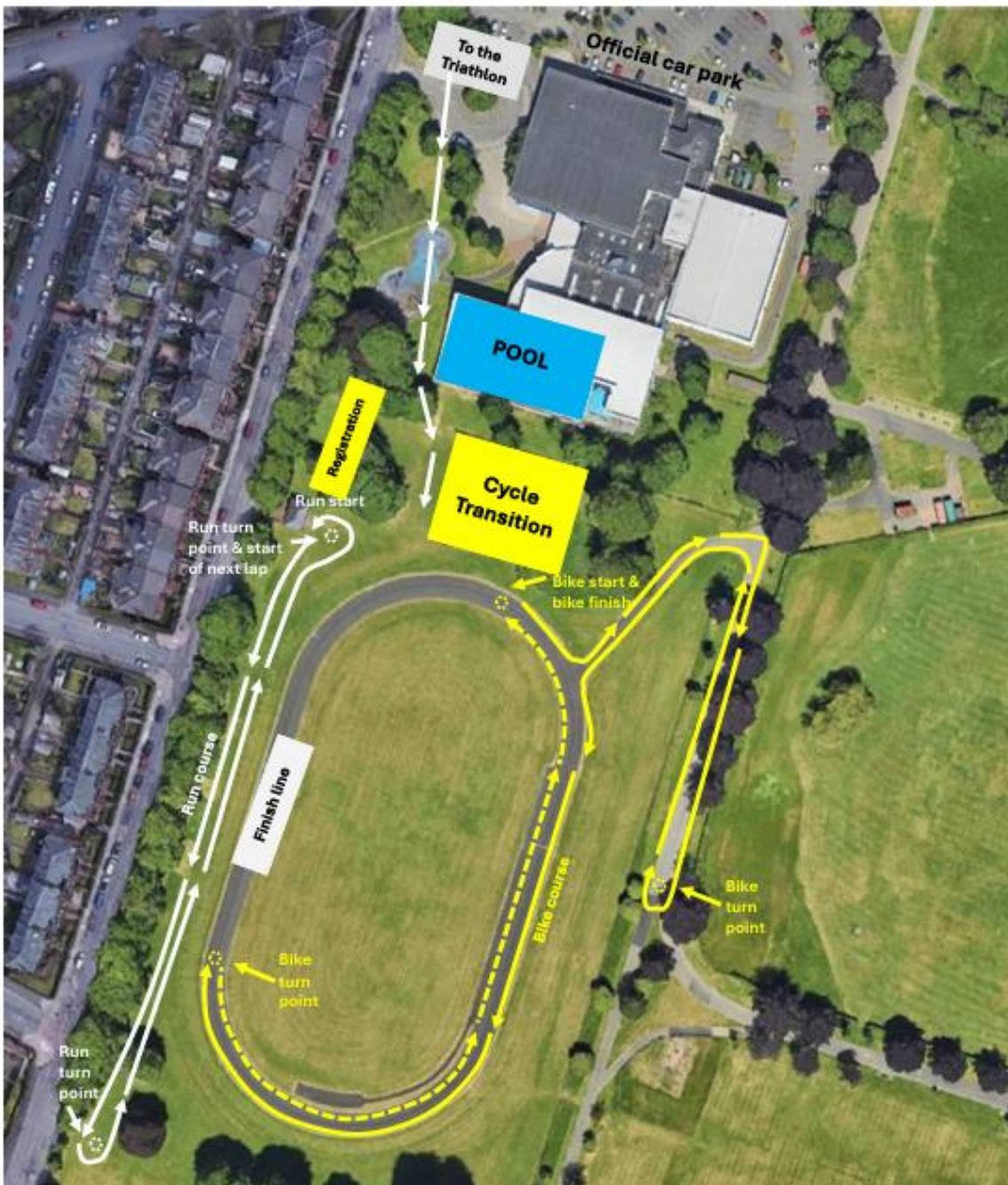
From Registration follow the signs 'Transition Entrance this way'



Cycle Transition Area

- Competitors and spectators must wear the supplied wristband to gain entry into the Cycle Transition Area.
- Once registered, rack the cycle in an empty space, along with anything else required for the run.
- The white tape denotes a racking position.
- Please note, although we allocate security staff to the Cycle Transition Area, we cannot be responsible for any items lost or stolen.

Arena Map



Please be at the swimming pool start 10 minutes before your start time for the compulsory race brief.

Swim

- The swim course is very straightforward. Lifeguards and official event crew will be on hand at all times.
- Children can wear any swimming safety device.
- The pool is 25 metres long.
- Participants in the Tin category will swim the width of the pool, this is in the shallow water.
- Swim caps are not compulsory so it's not a requirement to wear one. If a swim cap is desired, either use your own or ask for one from registration.

Cycle

- Please walk or run to the cycle mount line and commence the cycle section (no cycling in the transition area).
- The cycle course is entirely on tarmac within the park. The course is clearly marked out and easy to follow. Parents and guardians can follow their child for the cycle if they wish but are not allowed on the actual course.
- It is yours or your child/childrens responsibility to count the correct amount of laps on the cycle. Parents/guardians may help do this.
- Cycles must be dismantled at the end of the course and be placed back on the rack in the Cycle Transition Area.

Run

- The run is almost entirely on grass, except the run turn and the finishing straight. The course is completely post & taped and within the park. Parents and guardians can follow their child for the run if they wish but are not allowed on the actual course.
- It is yours or your child/childrens responsibility to count the correct amount of laps on the run. Parents/guardians may help do this.
- There is a drinks station during the run course and at the finish line that will be serving water.
- Once the correct amount of laps are completed, head down the finish straight and through the Mornflake inflatable finish gantry.

Relay

- Each member of the relay team completes one or two of the three disciplines of the Triathlon.
- At registration a wristband is supplied that is relayed to the finish line.
- After completing the swim, the swimmer passes the wristband to the cyclist inside Cycle Transition Area next to where the cycle is racked.
- The cyclist completes the cycle course and once the cycle has been racked, the wristband is passed to the runner.
- The runner completes the run; the other team members can join the final runner at the gap of the pedestrian crossing so they can all cross the finish line together and receive their medals. Please hand in the wristband at the finish line.
- All team members receive a medal.



Further Information

Race Conduct

Everyone involved in the event is there to ensure you have a safe and enjoyable experience, so we ask that you respect your fellow competitors and treat all technical officials, event organisers, race crew, volunteers and spectators with courtesy. Any abuse towards these people will not be tolerated and as a result you may be disqualified.

Timing

This event is intended for all abilities to complete the challenge of the triathlon and therefore we don't publish results in fastest to slowest order, instead they are published in alphabetical order by surname. We believe this is important to encourage all children to take part without the pressure of coming last, or not doing as well as other children. Every child will be a winner of the Glasgow Kids Triathlon. We will take an overall time for each competitor. Results will be published later the same day on our website www.uktriathlon.co.uk.

Finisher's Medal

All finishers receive the commemorative 2026 finisher medal.

Photography & Filming

UK Triathlon and our official event photographers, My Sport Photos, will be filming/taking photos to capture your child's best sporting moments. Images may be used for promotional purposes so remember to smile and wave at the camera! Images taken by My Sport Photos will be available to purchase post event. An email will be sent to you once the photos are available. For any photography inquiries please contact info@mysportphotos.co.uk or www.mysportphotos.co.uk.

Health & Wellbeing

If your child is suffering from any kind of bad chest, cold, sore throat or ear infection we advise they do not take part.

Hydration

Make sure your child/children are sufficiently hydrated before the event.

Can my friends and family spectate

Yes! Friends and family are welcome to spectate.

Illegal Equipment

For your safety and the safety of other competitors, certain items are banned during the event as well as in the cycle transition. This includes any music, headphones, headsets, technical earplugs (including bone conduction headphones), mobile phones and personal video recording devices.

Littering

Littering is prohibited during the event. Please use the bins at the feed stations or at the venue.

Race Format

UK Triathlon reserve the right to alter the date, start time, venue or format of an event. Similarly, changes to the event may occur due to adverse weather conditions, 'acts of God', water conditions or emergency road closures. Participants will be notified as soon as possible of any changes. As long as the event is staged no refunds or transfers can be given.





CALENDAR 2026

APRIL

19 STRATFORD TRIATHLON

2 distances, pool based
Stratford Upon Avon,
Warwickshire.

MAY

09 CHESHIRE KIDS DUATHLON

6 distances, for 5 to 16yrs
Barony Park, Nantwich

10 CHESHIRE TRIATHLON

2 distances, outdoor pool
Barony Park & Nantwich
Leisure Centre, Cheshire

16 GLASGOW TRIATHLON

+ Kids Triathlon
3 distances, pool based
Bellahouston Park

30 HENLEY KIDS TRIATHLON

6 distances, for 5 to 16yrs
Henley Leisure Centre,
Henley-on-Thames,
Oxfordshire

31 HENLEY TRIATHLON

2 distances, pool based
Henley Leisure Centre,
Henley-on-Thames,
Oxfordshire



JUNE

13 SHROPSHIRE TRIATHLON

2 distances, lake swim
The Mere, Cremorne
Gardens, Ellesmere,
Shropshire

14 ULTIMATE 150 TRIATHLON

3km S - 117km B - 30km R
Lake swim
The Mere, Cremorne
Gardens, Ellesmere,
Shropshire

14 ULTIMATE 100 TRIATHLON

2km S - 78km B - 20km R
Lake swim
The Mere, Cremorne
Gardens, Ellesmere,
Shropshire

**CLUB DISCOUNTS
AVAILABLE SAVE
UP TO 15% OFF**

14 ULTIMATE 50 TRIATHLON

1km S - 39km B - 10km R
The Mere, Cremorne
Gardens, Ellesmere,
Shropshire

27 CALDICOT TRIATHLON

+ Kids Triathlon
3 distances, pool based
Caldicot Leisure Centre,

AUGUST

01 BIRMINGHAM TRIATHLON

+ Kids Triathlon
3 distances, pool based
King Edward's School,
Birmingham

15 YORK KIDS TRIATHLON

6 distances, for 5 to 16yrs
York Sport Village, York

16 YORK TRIATHLON

2 distances, pool based
York Sport Village, York

SEPTEMBER

05 ALDERFORD KIDS TRIATHLON

5 distances, for 7 to 16yrs
Alderford Lake, Whitchurch

06 ALDERFORD TRIATHLON

3 distances, lake swim
Alderford Lake, Whitchurch

19 NORTH WEST KIDS DUATHLON

6 distances, for 5 to 16yrs
Barony Park, Nantwich

20 NORTH WEST TRIATHLON

2 distances, outdoor pool
Barony Park & Nantwich
Leisure Centre, Cheshire

OCTOBER

04 WARWICKSHIRE TRIATHLON

2 distances, pool based
Stratford Upon Avon,
Warwickshire.

OFFICIAL RACE UKTriathlon MERCHANDISE

KIDS OFFICIAL HOODIES £25



£13

KIDS TEES



KIDS CAPS £8

SINCE 1875
MORNFLAKE

BREAKFAST THAT GOES THE DISTANCE



PROUD TO SUPPORT UK TRIATHLON

[MORNFLAKE.COM](https://www.mornflake.com)





Thank
you

You're amazing!

Progress is only made possible by the extraordinary efforts of people like you.

Thank you to all our supporters - you're powering research!

It's not too late to join our team and help beat cancer.

Sign up today at cruk.org/team



Cancer Research UK is a registered charity in England and Wales (1089464), Scotland (SC041666), the Isle of Man (1103) and Jersey (247) © Cancer Research UK 2024

Together we are
beating cancer

SEARCH MY SPORT PHOTOS



SEARCH

Making it easy to search for your photos by Bib Number & Selfie!



PROFESSIONAL

You can concentrate on your race and we'll take care of your photos!



ONLINE

Your Photos will be online within 24 - 48 hours after each race



SCAN ME



www.mysportphotos.co.uk



[mysportphotos](https://www.instagram.com/mysportphotos)

More speed
to move
body and
mind



METASPEED™ SKY TOKYO

asics
sound mind, sound body

