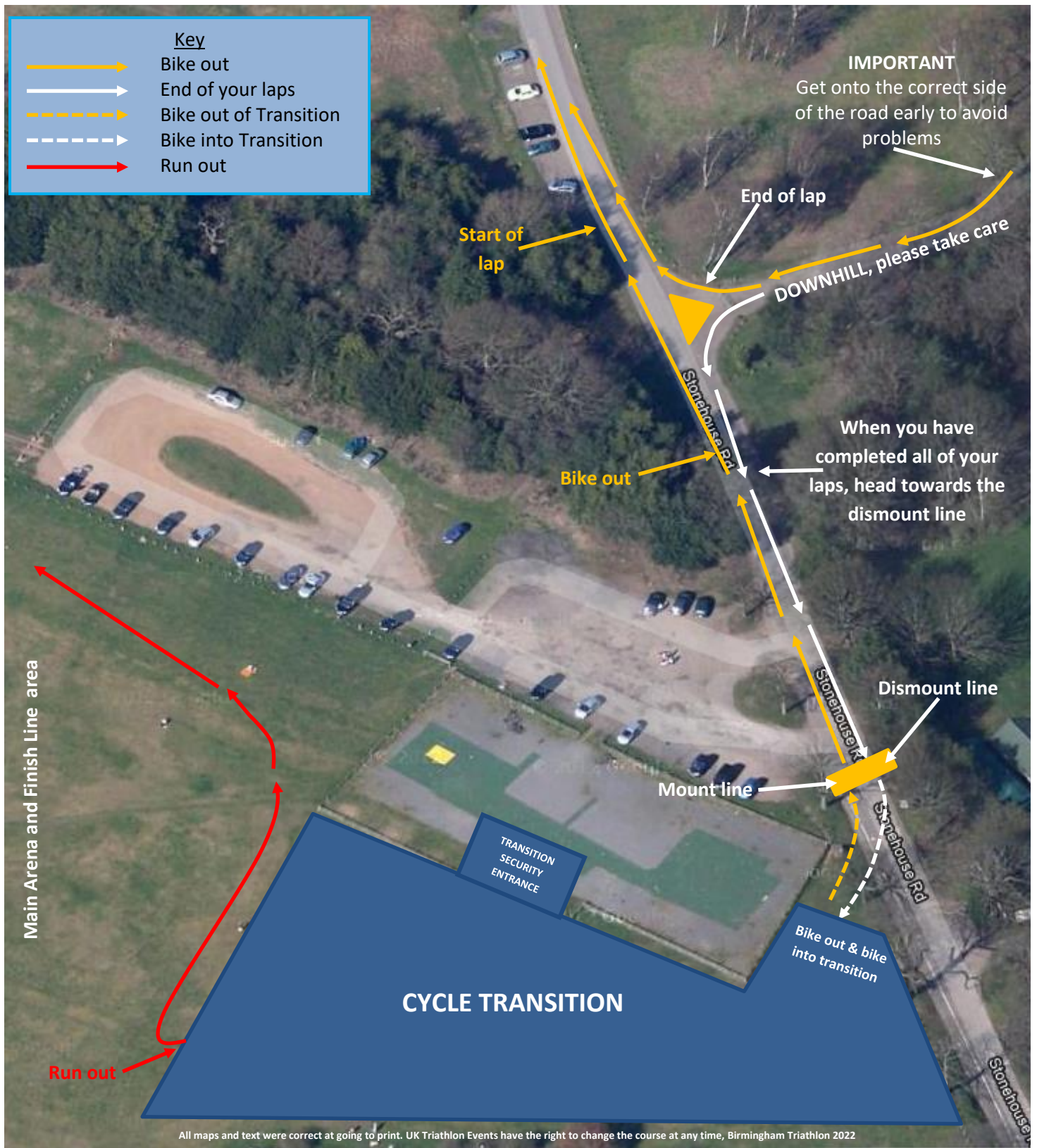


Birmingham - Start & end of the bike lap



Start and end of bike lap information

When completing a lap, you have to **turn a sharp right** to start your next lap or a **sharp left** to finish, this is a slight downhill, take extra care and slow down!

Make sure you get onto the correct side of the road when turning to avoid problems.

PLEASE CYCLE SAFELY AT ALL TIMES